

# Lufthansa Systems FlightNav

---

## General Navigation Data Information

**Issue 1/2024**
**06. September 2024**

### Effective Cycle 2410: MEA coded as altitude constraint in STARs

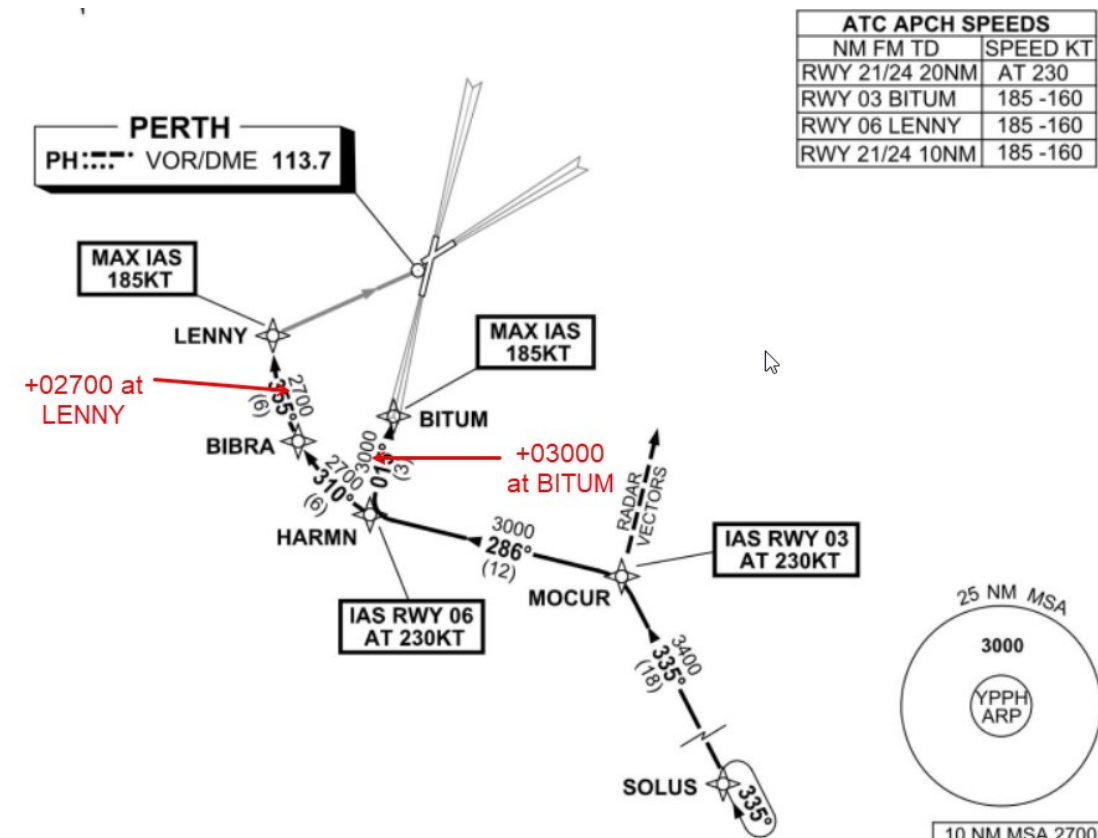
#### MEA

The Lido FMS data generally does not contain Minimum Enroute Altitudes (MEA) coded as altitude constraints in STARs, except in the following cases effective cycle 2410:

#### STAR

If state source does not publish an altitude constraint on the last fix of a STAR but publishes a MEA on this (last) leg, then the MEA value is coded as altitude constraint on the last fix of the STAR.

Example:



The MEA 02700 between BIBRA and LENNY is coded as altitude constraint +02700 at LENNY.  
The MEA 03000 between HARMN and BITUM is coded as altitude constraint +03000 at BITUM.

Please contact us in case of any questions or comments.

Lufthansa Systems FlightNav Inc.

FMS Customer Support

[fms.support@lhsystems.com](mailto:fms.support@lhsystems.com)

September 06, 2024