

# Lufthansa Systems FlightNav

## General Navigation Data Information

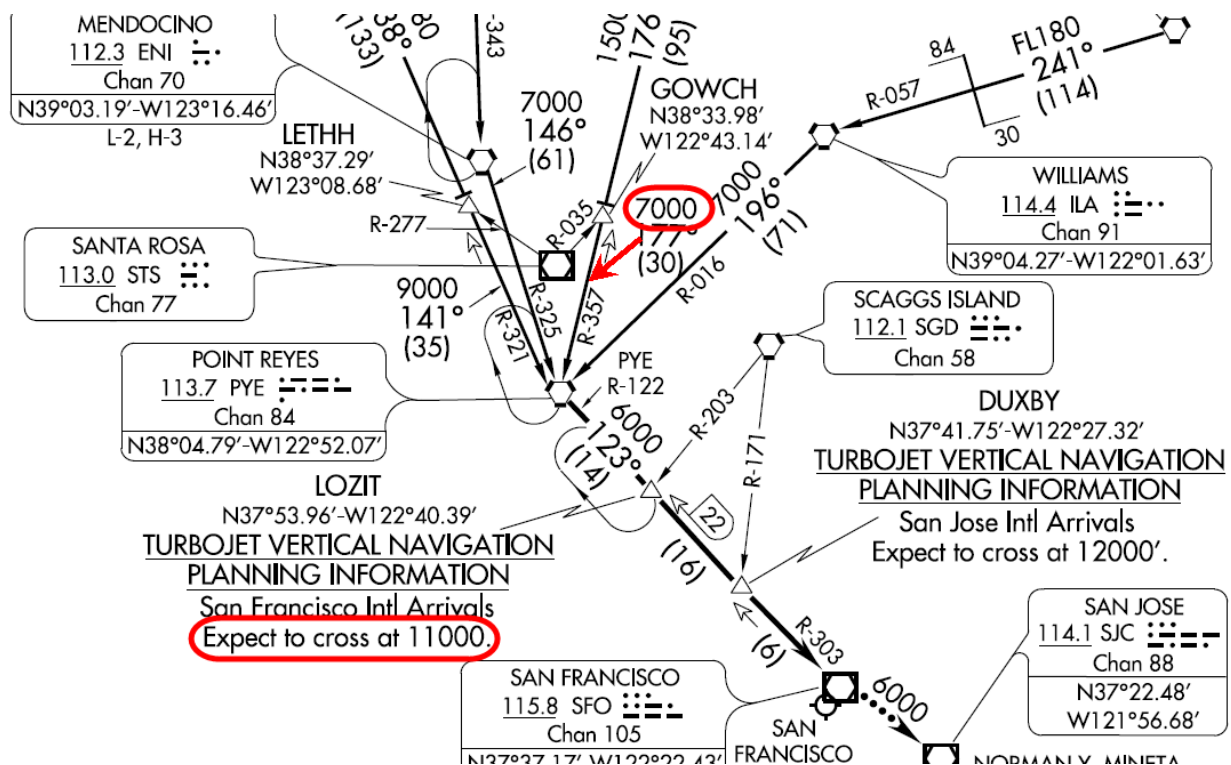
**Issue 1/2012**
**03. February 2012**

### Altitude Constraint Coding

Currently, the Lido FMS data contains Minimum Enroute Altitudes (MEA) coded as altitude constraints. As of cycle 1204, effective 05-APR-2012, Lufthansa Systems will remove such altitude constraints, and only include state published altitude constraints.

Additionally, "expect" altitudes (for example: "expect to cross at ....") will be removed as coded altitude constraints.

An example of a MEA and an Expect Altitude that will be removed as coded altitude constraints:



Please contact us in case of any questions or comments.

Lufthansa Systems FlightNav Inc.  
 FMS Navdata Customer Support  
[fms.support@lssystem.com](mailto:fms.support@lssystem.com)  
 February 3<sup>rd</sup>, 2012